

### Communications Control System



#### COMMUNICATIONS CONTROL SYSTEM

The Series 4000 is a programmable, multichannel, multiposition radio control console featuring three operator position styles to meet a variety of user needs.

- Police/Fire Dispatch
- Ambulance Dispatch
- Utility Companies
- Industrial Plants
- Forest Service
- Transportation
- Aviation

#### SYSTEM OVERVIEW

The Zetron Series 4000 Communications Control System is a full featured dispatch console for a multichannel radio system. It provides operators with an efficient means of monitoring and dispatching

with up to forty-eight radios, both conventional and trunked. A Series 4000 system is comprised of a Common Control Unit and one or more console operator positions.

Model	Channel Capacity	Operating Positions	Cross Channel Patches
4020	20	6	10
4048	48	16*	24

#### Common Control Units (CCU)

The CCU is the central "switch" that routes audio between radio/phone channels and console operating positions. Series 4000 CCUs are available in two capacities to match your application needs.

#### Consoles

The Series 4000 can be controlled and monitored from up to sixteen console operator positions. Three different styles of console positions are available and may be mixed in the same system: rackmount, desktop, and PC-based consoles.

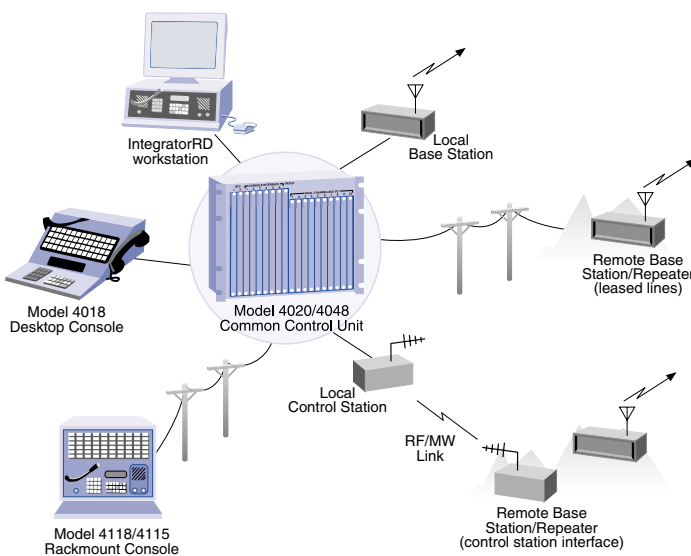
\* 15 with Patch Card installed

## Designed for Reliability

Depending upon the application requirements, the Series 4000 can be configured for "no single point of failure" or full redundant operation. The M4020 and M4048 Common Controllers, with their dual system buses, may be configured with dual system controllers and dual power supplies to ensure that no single failure will result in a complete loss of operation. For particularly critical applications, the Series 4000 Common Controllers can be configured for full redundant operation. Through the use of an automatically switched standby controller, two common controllers may be paralleled: a primary operational unit, and a "hot-standby" unit. The completely separate and isolated hot-standby unit is protected in the event that a lightning-induced transient causes the primary unit to fail. When this occurs, the standby unit is automatically brought on-line.

## Radio Interface Compatibility

The Series 4000 is compatible with virtually all manufacturers' base stations, control stations, and repeaters utilizing local or EIA standard tone and DC control protocols. Depending upon the configuration of the radio, these control protocols typically support frequency selection, activation of CTCSS tones, main/standby selection, and a host of other functions. The Series 4000 may also be interfaced to an EDACS® Orion®, or an iDEN® control station in a wireless console application. The wireless console allows operators to change the control station's talk-group, view group and local ID's, and review past call history. Similar capabilities, including private calls, are also available with the MPT 1327 radios utilizing the MAP27 protocol, and iDEN radios.



The Series 4000 offers exceptional application flexibility to meet a wide range of user requirements. Operating position types can be "mixed or matched", and radios and/or operating positions are easily remoted.

## INTERFACE OPTIONS

### S4000 EDACS Wireless Console

- Console system requires no direct connection to EDACS® site equipment
- Economical solution for primary or backup dispatch applications
- Upgrade Basic and Level 1 systems to incorporate dispatch console
- Supports a "mixed mode" of trunked radio (EDACS, iDEN, MPT1327/MAP27) and conventional radio control in a single operator presentation
- Displays group ID and local ID by number or user-defined alias text string
- Allows operator control of each control station's talk-group assignment
- Call history window shows voice and emergency calls
- Supports EDACS Individual-Call, Group-Call, All-Call, and Emergency-Call

### S4000 iDEN Wireless Console

- Supports Dispatching with iDEN and Conventional Radios
- Supports a "mixed mode" of trunked radio (EDACS, iDEN, MPT1327/MAP27) and conventional radio control in a single operator presentation
- Provides Easy Access to Popular iDEN features
- Status Messaging and Call Alerts with Emergency and Priority Messages Shown in Color
- Local Area Group Calls, Target Area Group Calls, and Private Calls
- Talk Groups Identified with Meaningful Names (e.g. Operations, Maintenance, Security)
- Status Message Window Displays up to 64 Messages with Callers Identified by Name
- Shows Time, Talkgroup, ID and 10 Character Representation of Status
- Maintains 24 Hour Log File of all Incoming Calls

### S4000 MPT1327 Wireless Console

- Wireless Console System for private or public MPT1327 Trunked Radio Network
- Multichannel console access to a trunked radio network without direct connection to the trunking site controller
- Perfect where direct trunked network connection is not permitted or not economic
- Suitable for a supervisory or emergency control center and is ideal for temporary or mobile control room
- Supports a "mixed mode" of trunked radio (EDACS, iDEN, MPT1327/MAP27) and conventional radio control in a single operator presentation
- Incoming call status queue window shows voice, status and emergency calls
- Enables monitoring of multiple trunked channels or talk groups
- Compatible with Motorola GM1200 and Tait T2020, T2035, and T2040 radios with dual port UART kit

The Series 4000 was designed to simplify the job of operating a multichannel system, allowing operators to concentrate on the content of their dispatching task. Product features include:

**Programmable Controls** — Button functions are fully programmable. Each is clearly labeled to provide function association. All primary functions are performed by a single keystroke.

**Up to three Unselect Speakers** — A Select speaker and up to three Unselect speakers provide a left/right audio effect, making it easy to distinguish whether the call was from the primary (Selected) channel or another channel. Selecting a channel moves its monitor audio to the Select speaker. Unselected audio channels can be divided and routed to one of three Unselect speakers by operator selection.

**“Channel Check” Integrated Instant Recall Recorder Option** — The Series 4000 may be configured to provide a “per channel” instant recall recorder. Recording duration is 4 minutes for each channel, and playback is accomplished through the select or unselect speakers. In the event that a radio call is received during playback, the recorded audio is paused.

**Emergency Alert/Acknowledge** — With mobile and portable radios equipped with MDC-1200 protocol, a user can press a button to transmit an emergency ANI signal to request immediate help. IntegratorRD provides an efficient way for the dispatch to receive the identification information, send an acknowledgment back to the radio, and respond to the emergency.

**Instant Call Paging** — The operator may “tone out” an entire sequence of pages with the press of a single Instant Call button. A two-level menu allows pages to be grouped into a logical structure (e.g. “police”, “fire”, “EMS”) for easy access. Paging sequences are automatically routed to the proper channel and frequency, minimizing the potential for errors. Paging sequences may contain self-initiating alert tones for indicating specific types of events. The button’s indicators provide a “check list” to verify that the proper pages were sent. Multi-format capability eliminates the need to have a different encoder for each type of pager/decoder.

**Patch** — Channels may be patched to other channels or telephone lines. The operator may monitor the patch and operate on other channels. One patch can involve more than two channels. Multiple concurrent patches are supported.

**Simul-Select** — The operator may select multiple channels simultaneously so that one dispatch may be broadcasted to several channels at once. Group-Selects may be invoked to select predetermined groups of channels.

**Individual Channel Volume** — Each channel’s volume may be set independently of others, allowing the operator to prioritize listening based on volume level. A

digital display shows volume percentage, allowing accurate settings even without audio present. Minimum audio levels can be programmed to avoid missed calls.

**Mute/All-Mute** — Channel muting instantly reduces the volume of a channel to a predetermined level. Removing a source of unnecessary traffic helps the operator to concentrate on the task at hand. All-Mute instantly reduces the volume of all non-selected channels at once.

**Call** — When channel activity is present, the channel’s “CALL” indicator activates, making it easy to locate the source of the call. The call indicator remains on for a few seconds after the activity stops — in case the operator was busy.

**Busy** — Whenever another console is transmitting on the channel, the channel’s “BSY” indicator illuminates. This makes it easy for the operator to distinguish parallel console transmissions from field activity.

**Transmit** — The operator may transmit over the selected channel simply by pressing the “Transmit” button or by pressing the optional foot-operated transmit switch. With “Instant Transmit”, the operator may transmit over a non-selected channel in order to give a brief reply without changing channel selection.

**Last-Call Transmit** — The operator may transmit on the last channel that experienced activity, allowing a call to be answered without knowing the channel that it occurred on.

**Volume Enhance** — (PC based console only) To help the operator quickly focus on important messages, audio on the indicated channel may be instantly boosted to an operator-controlled, preset level.

**Level Meter** — The LCD bar-graph level meter shows the level of the transmitted voice so the operators can speak at the proper level during transmissions. The meter also indicates level when call activity is present on the selected channel.

**12 or 24-Hour Clock** — To ensure that operators give accurate time reports over the air, all clock displays of the entire Series 4000 System are synchronized. The supervisor’s clock display is also used to show diagnostic information.

**Console Intercom** — Allows an operator to call and talk to another console operator within the system without using the phone or leaving the position. Only the “called” console is involved; other console operators are not affected.

**Auxiliary Input/Output** — Operators may control various contact-closure operated devices (such as lights, door locks, and voter controls) from the console. External inputs (such as voter displays and alarms) may be monitored at the console.

**Alert** — Up to four different alert tones may be transmitted to indicate the type or priority of the dispatch to follow.

### DESKTOP CONSOLE — Model 4018

For users requiring a compact desktop console with styling suitable for an office environment, the **Model 4018** represents an ideal solution. Measuring 9" x 18" x 14" (HxWxD), the M4018 features an



attractive two-tone clam-shell design with select and unselect speakers, clock/audio level meter, volume controls, and a built-in paging encoder. The Model 4018 supports a total of

76 buttons for control of system, channel, auxiliary I/O, and paging functions. Two LEDs adjacent to each channel control button indicate status of the various channel functions and auxiliary I/O devices.

Although the Model 4018 can handle up to 24 channels, the typical system does not exceed 6-10 channels due to the limited number of available buttons. Users requiring more channel capacity than this should consider either the M4118/4115B or the IntegratorRD workstation.

### RACKMOUNT CONSOLE — Model 4118/4115B

For users who require a rackmount installation or need a console with up to 24 channel capability, Zetron offers the **Model 4118** Dispatch Console and **Model 4115B** Console Expander. Each unit is 5 1/4" high x 19" wide with a panel designed to facilitate mounting in a standard EIA 19" rack.

The Model 4115B Console Expander provides 60 programmable function keys, each with dual LEDs for status indication of key functions. At least one M4115B is required with each M4118. This configuration provides functionality that is identical to that of the M4018 with the added advantage of expandability. Up to three M4115Bs can be interfaced with a M4118, providing as many as 196 buttons for control of channel, auxiliary I/O, Instant Call pages, and other functions.



### PC-BASED CONSOLE — IntegratorRD workstation

The **IntegratorRD** radio dispatch workstation is comprised of a host computer, monitor, Model 4217B Audio Panel, and IntegratorRD software. The IntegratorRD workstation is the most sophisticated and largest capacity operator position in the Series 4000 family. For applications requiring state of the art performance, the IntegratorRD workstation supports multi-tasking, networking, and multiple monitors.

Operating under a Windows NT or Windows 2000 platform, IntegratorRD displays up to 36 channels on a single screen, providing a compact and intuitive means of controlling even the most complex radio system.

With its multi-screen user interface, IntegratorRD can easily accommodate up to 48 channels, hundreds of Instant Call pages, and a generous number of external alarm inputs and control outputs.

Screens may be custom tailored by the programmer for a variety

of tactical situations and later recalled with a single mouse click. Thus, only necessary channels are present on the screen even when dispatch requirements change from hour to hour.

Control actions are accomplished with a simple "point and click" mouse operations or, when appropriately configured for touchscreen operation, by touching an icon on the screen.

IntegratorRD allows several types of information (e.g. ANI calls and alarms) to be presented to the operator as a descriptive name or phrase rather than an ID number. Pages can be initiated by direct entry of a "cap code" or with an Instant Call "button". Instant Call pages of a given type may be grouped into logical "folders" to simplify and speed operator access.

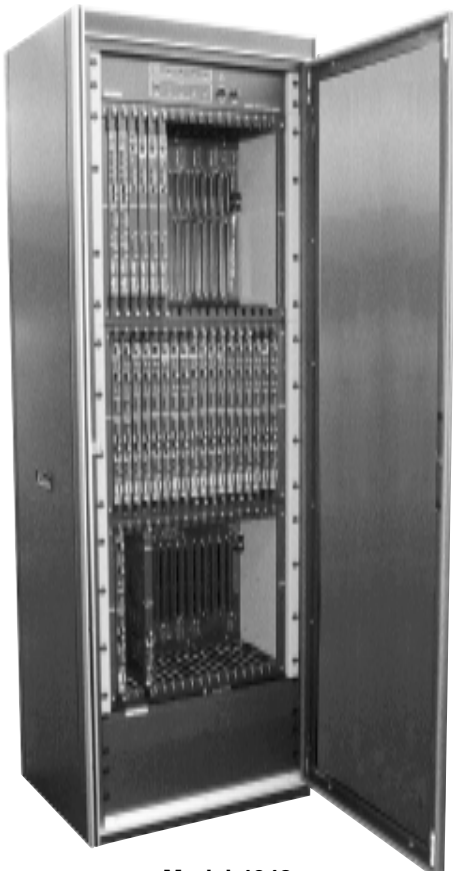
For additional detail, please contact Zetron for a copy of the IntegratorRD Specification Sheet.



## COMMON CONTROL UNITS

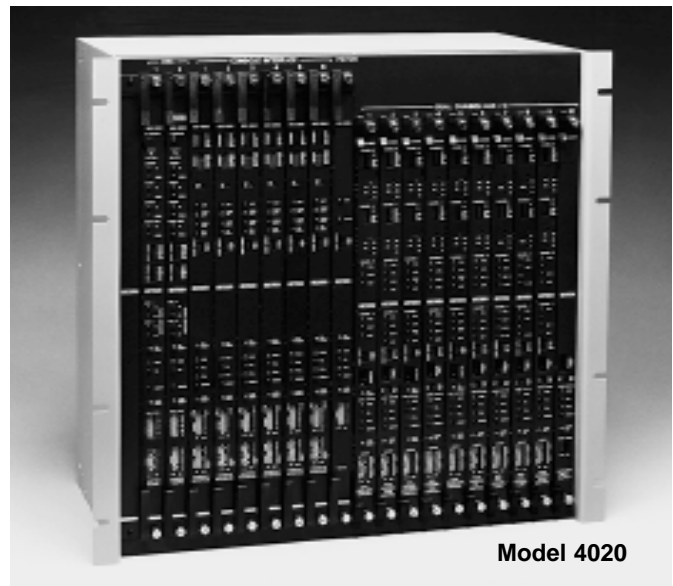
The Common Control Unit, or CCU, is the central “switch” that routes audio and control signals between the dispatch operating positions and external communications devices such as radios and telephone lines. The modular architecture of the Series 4000 CCU allows a system to be configured to economically meet the user’s current needs while providing a cost-effective upgrade path for future expansion. Two sizes of common controllers are available. The Model 4020 provides a single card cage solution for applications requiring up to 20 channels. For larger applications, the Model 4048 accommodates up to 48 channels and 16 operating positions. Both employ the same architecture and a common set of circuit cards (with the exception of minor differences in the patch card). Each can be configured for “no single point of failure” with dual system busses, dual power supplies, and dual controllers. Standard features include a dial-up diagnostic port for remote monitoring, provisions for connection of an external time reference, and dual voltage (12 VDC and 120/240 VAC) operation with the Model 4048 power supply. An optional Radio System Management software package allows users to collect usage statistics on a “by channel” and “by position” basis.

Circuit card options to populate the Model 4020 and 4048 CCU include: System Traffic Controller, Console Interface, Dual Channel T/R Control, Auxiliary I/O, and Patch.



**Model 4048**

Shown mounted in optional cabinet.  
Contact Zetron for cabinet options and pricing.



**Model 4020**

The **System Traffic Controller**, or STC, performs the central control function for all cards in the CCU. STC’s may be operated individually, or in a redundant configuration with one operating in “hot standby”. In the event that the primary card fails, the hot standby unit assumes control without interruption. The STC features ports for remote diagnostics via a modem, a diagnostic printer output, an external time reference, and radio system management output to an external PC executing the Radio System Management software. Up to 4MB history of card configuration reports, system changes, and errors are stored on the STC for Zetron Service Assistance.

The **Console Interface Card** provides the interface circuitry to connect the CCU to one dispatch console position (desktop, rack, or video).

The **Dual Channel T/R Control Card** provides a two-channel interface capability for base stations, control stations, repeaters, “POTS” telephone lines, PAs, or intercoms.

Selected dual channel cards can optionally be configured with “Channel Check”, an integrated four minute per channel instant recall recorder.

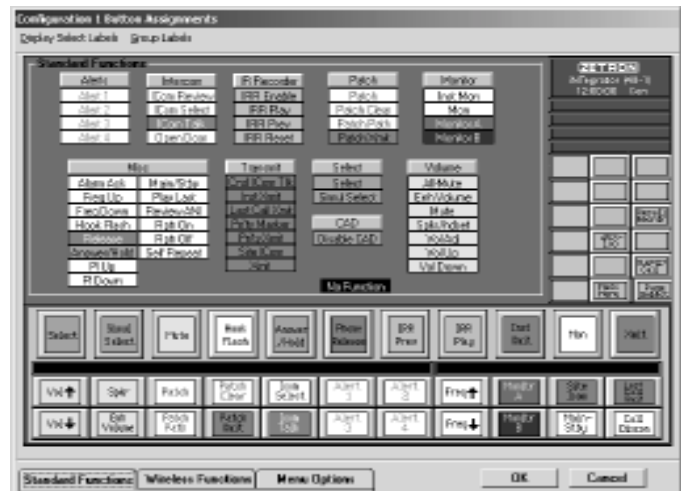
Each **Auxiliary Input/Output Card** provides relay outputs and discrete inputs for control/monitoring of external devices. Typical applications include room light control, remote door opening, intruder alarms, intercom signaling, and voter inputs. The card also contains an IRIG-B decoder to support an interface with external time references using that protocol.

The **Patch Card** is mandatory for applications requiring cross-channel patch capability. Both radio-to-radio and radio-to-telephone patches are supported. A ten-patch option is available for the Model 4020 while the Model 4048 Patch Card options support up to 24 patches.

## PROGRAMMING OF CONSOLES

One of the unique features of the Series 4000 system is that it is fully field programmable with the Console Programming System (CPS) or Radio Dispatch Programming Software (RDPS), and an IBM-compatible personal computer. CPS and RDPS not only allow channels to be configured for various types of base stations, but they also allow any button to be assigned any available function. This eliminates costly upgrades while allowing the system manager to reconfigure the buttons (or icons) at any time in order to accommodate new operating procedures or radio system changes. Key top labels are removable and do not require engraving, allowing the keys to be relabeled as easily as they are programmed. Standard key top legends are supplied by Zetron while custom legends may be created in the field using transparent key tops.

Consoles are shipped from the factory programmed and labeled to customer specifications. Changing the function of a key is simply a matter of using the cursor to select a new function from a menu-style list on the computer screen. When all selections are made, the new configuration is saved on the diskette and printed out for a paper copy. The console to be changed doesn't have to be taken out of service until all programming changes have been completed and saved on diskette. When



*Radio Dispatch Programming Software (RDPS) for the IntegratorRD workstation.*

ready, stored configurations are downloaded to consoles in a matter of seconds. Configurations can also be uploaded from a console to a PC for storage or modification.

The CPS and RDPS Programming software programs run on a PC.

## INSTALLATION AND MAINTENANCE

The Series 4000 is easy to install because of its "skinny wire" design. The Common Control unit is typically installed in an equipment room near radio and telephone line terminations where the bulk of the wiring is performed. Only 5-pairs of wires must be run from the equipment room to each console. This not only simplifies cable routing but reduces cable costs. Connections between the Common Control unit and the radio/telephone terminations are via 25-pair cables and punchdown blocks. Standard or lightning-protected punchdown blocks are available.

Dispatch consoles may be separated from the Common Control Unit by any distance. Short distances allow direct wiring via 5-pair cable, while longer distances require the use of modems. When modems are used over leased lines, only 5-pairs of audio grade lines are required. When used over microwave, only three full-duplex channels are required.

Channel configuration is performed by CPS/RDPS, jumpers and switches. Each channel may be configured for 2-wire, 4-wire or 6-wire (E&M), full-duplex or simplex,

high or low impedance. Channel test points and level adjustments are accessible without the need for an extender card. All channel status LEDs on the cards are visible from the front of the Common Control.

Each card in the Common Control performs continuous self-diagnostics. If a serial RS-232 printer is connected to the system, the diagnostics can be automatically recorded. The supervisor's console is notified in the event of a problem.

The distributed microprocessor architecture of the Series 4000 is tolerant to component failure and can operate despite the loss of a channel or console. LED indicators identify which card may be causing a problem. A card or an entire console may be removed or replaced while the system is in operation.

The service manual contains full schematics, parts IDs and parts lists. Factory service, spare boards, and spare parts kits are available. Available for-fee services include factory or on-site training, on-site commissioning, and after-hours service technician support.

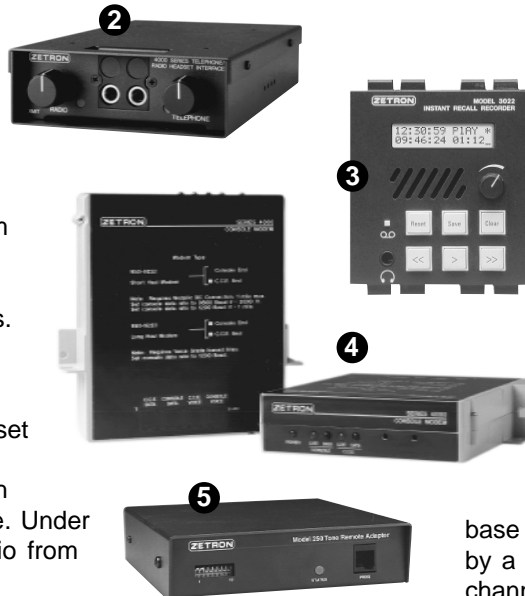
**Microphone/Headset Options**

A wide range of microphone and headset options are available. Each type is compatible with the desktop, rackmount or video consoles. Options include console-mounted **gooseneck microphone**, **desktop microphone** with PTT bar, **headset jack** with volume control, **secondary training headset jack**, and **PTT handset** with cradle. Any console may be equipped with two of the options; one gooseneck or desk microphone, and one headset or handset. "Smart" audio switching always ensures that the proper microphone is activated. Plugging a headset into its jack or lifting the handset from its cradle automatically switches the select audio from the console speaker to the earpiece. The **footswitch** option allows hands-free transmit and monitor operation.



**Modems**

An external modem pair is used to remotely locate a dispatch console from its Common Control Unit when the distance between them exceeds 2000 feet. The modem provides amplification of audio signals and conversion of data signals to in-band audio signals.



**Telephone Radio Headset Interface**

The Telephone/Radio Headset Interface allows the operator to use a common headset for both telephone and dispatch console. Under normal circumstances, the audio from the console's select channel is presented in the operator's headset. Upon activation of "XMIT", the operator's voice is directed to the selected channel of the console. When the telephone instrument is taken off-hook to answer a call, select channel audio reverts back to the console's select speaker, and telephone audio is presented in the operator's headset. The operator may then carry on a full-duplex telephone conversation using the headset. While off-hook, radio dispatch is muted to the phone caller. Requires "off-hook" contact closure from telephone for automatic switching.



**CAD Encoder Port**

For operator positions equipped with rackmount or desktop consoles, a paging encoder—such as the **Model 25 Encoder**—provides a Computer Aided Dispatch (CAD) port that allows the CAD system to select the proper tone sequences and channels, eliminating much of the potential for error. CAD interface is standard on the IntegratorRD workstation.



**Instant Recall Recorders**

Zetron's **Instant Recall Recorders** are used to temporarily record and replay radio and/or telephone traffic that passes through a dispatch position. They allow the operator to replay for verification his or her recent traffic without having to leave the position to search for the recording at the logging recorder. The **IntegratorIRR** Instant Recall Recorder is a Windows 2000 voice recording application which adds Integrated Workstation (IWS) call recording/playback capability to 9-1-1 telephone and/or radio dispatch systems. Zetron also offers the **Model 3022** for rackmount console positions, which can be configured to meet specific needs.

**Automatic Number Identification (ANI)**

Field units equipped with ANI encoders may be identified at the console whenever they transmit, providing instant identification of the calling party. ANIs may be stored and queued so that multiple ANIs may be reviewed in the order in which they were received. The rackmount console operates like the desktop with its single display. The IntegratorRD workstation displays the ANI, or its alphanumeric alias, in each channel's display area. ANI formats supported include DTMF, 5/6 tone, GE-Star and MDC-1200.

**Tone Remote Adapter**

Zetron's **Model 250 Tone Remote Adapter** adapts to most EIA-standard base station radios so they can be controlled by a dispatch console operator. Multiple channel selection for up to fifteen frequencies, up to six control outputs, and monitor and transmit (PTT), make the Model 250 a powerful unit. Twelve preset configurations of channel combinations, control outputs, and monitor functions make the Model 250 easy to use.

**Door Intercom Interface**

The Door Intercom Interface allows intercom station call and audio signals to be monitored and controlled via the operator consoles. The press of a station's call button provides audible and visual indicators to the operator. The operator may select one of up to 12 stations to monitor or speak through. Compatible with common 3- or 4-wire intercom modules such as Aiphone LE-D. (Not suitable for "multi-master" intercom systems.)

Products pictured:

1. Microphone/Headset Options
2. Telephone Radio Headset Interface (TRHI)
3. Model 3022 Instant Recall Recorder
4. Modem
5. Model 250 Tone Remote Adapter

## SPECIFICATIONS

### TRANSMIT ELECTRICAL SPECIFICATIONS

Audio Output	+10 dBm max. into 600 ohm line
Output Impedance	Transmit: 600 ohm balanced. Idle: 600 or 3500 ohms
Distortion	<2% at full output. Hum, Cross-Talk all 50 dB at full output
Microphone Input	-65 dBm for full output
Aux. Mic Input	-20 dBm for full output
Page/Spare Input	-15 dBm, not compressed
Frequency Response	-3 dB to +1 dB from 250-3400 Hz except guard tone notch
Compression	Input level increase of 30 dB above knee of compression causes <3 dB output increase

### RECEIVE ELECTRICAL SPECIFICATIONS

Input Impedance	600 or 10K ohm (4-wire) 600, or 3500 ohm (2-wire)
Line Balance	66 dB at 1000 Hz
Rx Sensitivity	-30 dBm max. at knee of compression; adjustable
Frequency Response	-3dB to 1 dB from 250-3400 Hz except guard tone notch
Compression	Input level increase of 30 dB above knee of compression causes <3 dB output increase
Distortion	< 2%
Call Light	Sensitivity 20 dB below knee of compression (vox operation)
Audio Outputs	5 watts into 4 ohms
Mute	Programmable from 0 to -50 dB "All-mute" time programmable

### PHYSICAL SPECIFICATIONS (H x W x D)

Model 4018	9 x 18 x 14 inches
Model 4118	5.25 x 19 x 4.5 inches
Model 4115	5.25 x 19 x 2.25 inches
IntegratorRD Workstation	
Video Display	Varies with selected monitor
Audio Panel	5.25 x 19 x 4.5 inches
Model 4048	
Chan. Card Cage	15.75 x 19 x 9.75 inches
Cons. Card Cage	17.5 x 19 x 9.75 inches
Power Supply	3.5 x 19 x 9.75 inches
Model 4020	22.75 x 19 x 10 inches
Operating Temp	0 to 45 degrees Celsius

### OTHER ELECTRICAL SPECIFICATIONS

Capacity (M4048)	2-48 Channels 1-16 Operating Positions (15 w/ Patch Card)
Capacity (M4020)	2-20 Channels 1-6 Operating Positions
Console Interface	3 audio pairs (Select, Unselect, MIC) and 2 data (RS-422@1200, 9600 Baud)
Channel Audio	2-wire simplex/half-duplex, or 4-wire half/full-duplex
Channel Control	Local, E&M, Tone Remote, DC* Remote, Telephone (end-to-end), and selected trunking radio protocols
DC Control	Programmable from $\pm 15$ mA in 2.5 increments, plus $\pm 5.5, 6.0, 11,$ and 15.5 mA. Operable up to 8K ohm loop resistance. Accuracy $\pm 0.25$ mA
Tone Control	15 standard tones supported, programmable (in 100 Hz increments) to 650-2050Hz. High Level Guard Tone duration 100-790 msec. Function Tone duration 40 msec. Guard Tone Freq. 2175 Hz, alterable. Tone freq. accuracy $\pm 0.2\%$ ; timing accuracy $\pm 1.0$
Local Control	PTT normally open relay contact rated 1.0 A at 24 VAC/DC
E&M Control	Tx control via PTT relay, external 48V required
Trunking Control	EDACS (Orion), MAP27, iDEN
Busy Chan. Detect	Local Cross-Busy detection; Guard Tone or DC Control detection (LOTL)
Time Synch	IRIG-B (with Aux I/O Card) RS-232 (1200, 2400, 9600, 19.2 Baud)
Radio Management Port	RS-232 (1200, 2400, 9600, 19.2 Baud)
Logger Port	RS-232 (1200, 2400, 9600, 19.2 Baud)
Modem Port	RS-232 (1200, 2400, 9600, 19.2 Baud)
Recorder Outputs	1 per channel (Tx/Rx audio summation), plus 1 output per console. 0 dBm level, 600 ohm single ended
Power Input (M4048)	85-132 VAC 170-264 VAC 47-63 Hz 12-13.8 VDC 280 Watts maximum
Power Input (M4020)	95-240 VAC 2 amps 50-60 Hz 150 Watts maximum
Approvals	FCC part 15, FCC part 68

For a copy of a detailed Series 4000 Configuration Guide, contact Zetron Public Safety Sales.

\*M4020 modular power supply supports up to 5 simultaneously keyed DC remote channels when M4020 card cage is fully populated. For greater DC remote capacity, select M4048 power supply, or the Model 4020 dual supply.

All trademarks are property of their respective owners.

Zetron, Inc. PO Box 97004, Redmond WA 98073-9704 USA



Ph: (425) 820-6363 Fax: (425) 820-7031 Email: zetron@zetron.com

www.zetron.com

European Office: Zetron, Inc. 27-29 Campbell Court, Bramley, TADLEY, Basingstoke, RG26 5EG, UK Phone: +44 1256 880663 Fax: +44 1256 880491

Australasia Office: Zetron, Inc. PO Box 3045 Stafford Mail Centre, Stafford QLD 4053, Australia Phone: +61 7 3856 4888 Fax: +61 7 3356 6877

See Zetron price list for option pricing.

Specifications subject to change without notice.

005-0150R February 2002